



SGI® Trusted Edge®

Trusted Edge enables intelligent data analysis and automated, policy-based content migration from primary storage to the SGI Storage Fabric

According to IDC, the digital universe is doubling every two years, and many organizations are finding it too expensive to store all of their growing enterprise data – particularly less frequently accessed data – on their primary storage. In addition, administrators are finding that their backup cycles are becoming out of control, and many are questioning the value of continuing to back up data that has not been accessed or modified in



years using standard backup processes (daily incremental, weekly full). Primary storage and standard backup processes make sense for data that is still “in process” and requires the high I/O speeds and incremental backups while active. But in most organizations, less than 20% of data is really active, and treating it as such does not make much sense.

Most organizations will have to purchase additional storage this year to handle their growing data requirements. And most organizations will continue to cling to the notion of throwing more disk at the problem regardless of (1) the fiscal challenges associated with primary disk cost/TB, (2) exposure/risk of slow restore from outdated backup process, and (3) high facility costs (space, cooling and power requirements) associated with primary disk storage. Nonetheless, administrators now have a choice to break out of this old way of thinking and begin to intelligently use storage options to reduce their costs, automate their management functions and guarantee that their data is always available.

Using Trusted Edge



SGI Trusted Edge is simple to use software that seamlessly integrates with your primary storage devices and provides analytical tools and a policy creation engine that can automate the intelligent migration of less active data to the SGI virtualized storage fabric. SGI’s storage fabric is a holistic storage management solution that abstracts all storage (SS disk, RAID, JBOD, SATA, WORM, Cloud and Tape) by creating an internal cloud using a global namespace with virtually unlimited scalability. SGI’s virtualized storage fabric provides organizations with the ability to guarantee the integrity of their data. Moreover, it provides users and applications with forever-read access to their information without the headaches of having to “restore” data because all content is stored in native file format. And because StorHouse is a hardware agnostic software solution, organizations have the benefit to leverage their existing storage devices and purchase new ones that match their budgets and requirements.

Benefits

Trusted Edge provides the following benefits:

- > You can profile data stored on higher priced primary storage to analyze access patterns, which applications are creating the data and driving storage capacity, and who is creating/accessing it.
- > Based upon the profile, you can easily develop an intelligent data management strategy. The statistics provided enable you to assess what storage options make the most sense for your environment from a cost/performance perspective.
- > Trusted Edge provides a way to seamlessly integrate with your expensive primary storage and intelligently migrate data to SGI’s storage virtualization platforms.
- > SGI’s virtualized storage fabric solutions creates a secondary storage layer where you can blend any storage option (SS disk, RAID, JBOD, WORM, Tape) into a holistically managed platform that provides the lowest TCO and unparalleled scalability.
- > By storing data in native file format, SGI enables direct user/application access either through a file stub on the primary storage level or through a global name space that appears as a drive letter.
- > Trusted Edge and SGI’s tier virtualization solutions provide end-to-end data assurance with complete data validation from ingestion through the entire content lifecycle.
- > SGI’s virtualized storage fabric simplifies your entire backup process by reducing your standard (incremental/full) by 80% in most cases.



Trusted Edge Features

- > Sophisticated data analysis tool
- > Policy creation engine that can leverage data profile information to intelligently manage the movement of data from the primary storage layer to the SGI Storage Fabric
- > Numerous policy categories including Copy, Migrate (with stubbing option), Synchronize (source to destination, destination to source, cross synch), Verify Hashing, Delete (folder/file), and Delete (stale stubs)
- > Granular policy creation filters such as File (extensions, names, owners), Folder Names, Date (created, modified, access), and File Attributes (standard, size) plus support for managed shelf storage
- > Immediate or scheduled policy execution on a regular basis using the Trusted Edge job scheduler
- > Robust data validation using both SHA1 and MD5 hashing algorithms
- > Supports most NAS devices

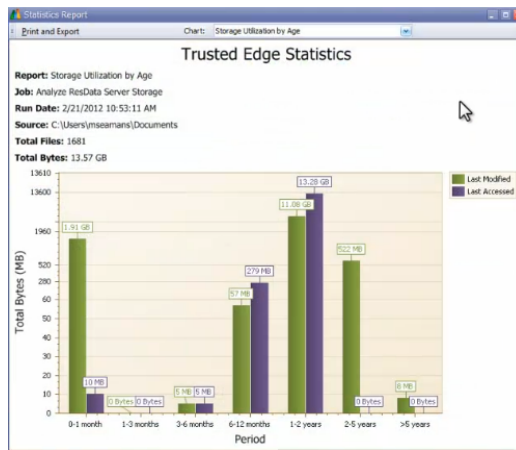


Figure 1: Trusted Edge Statistics

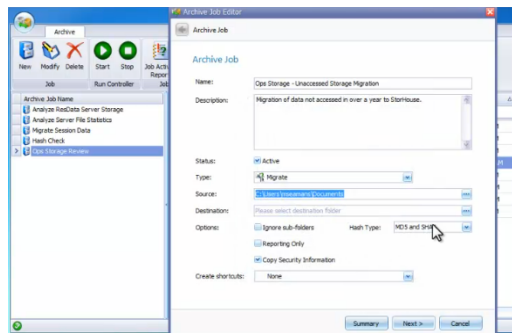


Figure 2: Trusted Edge Policy Engine

Analyze - Figure 1 illustrates one of the statistics reports that Trusted Edge provides. In this case, the user is presented with a picture of file activity (last modified, last accessed) to help in determining where data should be stored. In this example, over 95% of the data stored has not been touched in over a year, and could be migrated to lower cost media within the SGI virtualized storage fabric. Migrating data like this can result in impressive ROI numbers and payback periods as quickly as three months.

Migrate - Based upon your analysis, you can simply use the Trusted Edge policy creation engine to schedule jobs to perform such tasks as copy, migrate, and synch (three ways). You can also leave pointers on the primary storage, remove stale pointers and select two methods of hashing (SHA1 & MD5 algorithms). In addition, scheduling is extremely flexible, and Trusted Edge provides reporting and audit trail information.

Manage - Once data is within the SGI storage fabric, you can centrally administer how data is managed for various purposes such as backup, archive, HSM, internal cloud, device migration, disaster recovery and digital preservation.

Summary

For customers looking for a complete, end-to-end, cost-correct storage management solution that can seamlessly integrate with their primary storage, Trusted Edge from SGI provides a total ROI package that can match performance and price to specific organizational needs and requirements. If you are looking to move away from the old way of addressing your storage needs (keeping everything on primary disk and using antiquated backup procedures), and you want a more efficient and cost-effective solution, then StorHouse/Trusted Edge is the choice for you.

For more information about how a Trusted Edge solution can benefit your organization, or to learn about other SGI products, contact an SGI sales representative, or e-mail your questions to <http://www.sgi.com/sales/askarep.html>.



sgi.com/global