



T120

Hit the Backup Bull's-Eye

**Corporate Headquarters**

46600 Landing Parkway
Fremont, CA 94538
tel 510.933.8300
fax 408.321.0293
www.sgi.com

Global Sales and Support

North America +1 800.800.7441
Latin America +55 11.5185.2860
Europe +44 118.912.7500
Asia Pacific +61 2.9448.1463

Designed to meet the performance backup and archive requirements of the most demanding small and medium-sized businesses, the Spectra T120 library is easy to use, manage, and maintain. Installation and configuration is quick and simple, and component redundancy ensures the highest quality of reliability. Highly flexible, the T120 allows you to start with the Enterprise-level features that you need now, and add functionality and capacity as your data grows and backup requirements change. The T120 scales from 30 slots up to 120, providing a storage capacity of 360TB of compressed data. With the ability to install up to 10 half-height LTO-5 tape drives, the T120 offers compressed data transfer rates up to 10 TB per hour. The T120 allows you to hit the bull's-eye every time with this exceptionally high-performance tape storage solution.

SPECTRALOGIC.COM

Simplified Management



The common BlueScale® software interface for all Spectra libraries brings enterprise command and control features to the T120. Available through the library's LCD color touchscreen and remote web access, BlueScale is an easy-to-navigate, browser-based library interface that enables you to work simply, flexibly, and safely with your data.

BlueScale manages your library without any external servers, additional software license charges, or increased power or cooling requirements. This feature-rich management tool provides a single interface to manage library configurations, partitions, encryption key management and library/media/tape drive health monitoring. BlueScale enhances your library operations by improving efficiency, manageability and availability.



The Spectra T120 offers encryption and key management as seamless, integrated standard features. Spectra's BlueScale Encryption utilizes AES-256 bit encryption through the library for LTO-4 and LTO-5 drives. It lets you seamlessly and affordably add encryption to your backup strategy, with no changes to backup policies and no additional hardware or software.

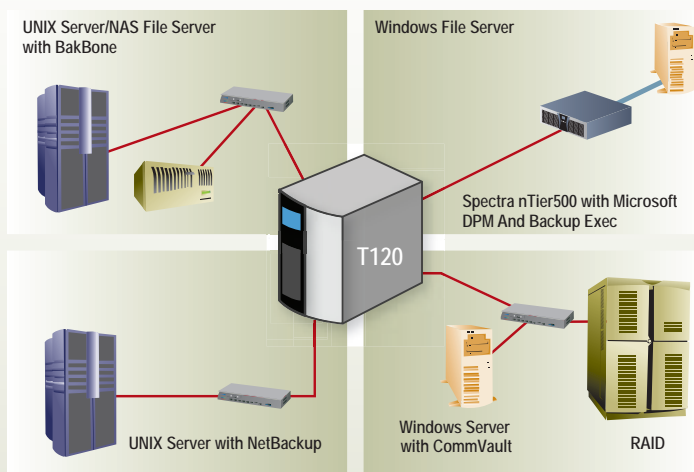
Certified Media: Simple Management With Great Storage Density

Spectra Certified Media is ready to use when you receive it: pre-labeled, pre-loaded in TeraPacks, and covered by Spectra's Lifetime Media Guarantee. Custom-fitted for long-term storage in Iron Mountain cases, Certified Media provides a wide range of media options: bulk or individual cartridges, cleaning cartridges, and custom and standard bar-code labels. Spectra's LTO tapes also uniquely support Media Lifecycle Management for lifetime health tracking and notification of at-risk media.

Efficiently managing hundreds of tapes is an ongoing challenge. Spectra's patented solution: TeraPack® media containers. The unique TeraPack design gives Spectra's T-Series libraries unrivaled storage density, offer secure-stacking for storage and give you highly efficient media handling. The eight or ten tape TeraPack container allows for bulk media handling, reducing the time you spend handling tapes from 70% to 90%.



Interoperability



— Gigabit Ethernet
— Fibre Channel

With support for multiple connectivity protocols as well as all major backup software packages and operating systems, the T120 system fits easily into any environment. With Shared Library Services (SLS) the T120 can easily be configured to use partitions and simultaneously support multiple generations of LTO technology and different connectivity protocols.

Complete Lifecycle Management

For highly reliable tape archive and backup, Spectra T-Series tracks and reports the expected lifetime utilization thresholds for tape media, drives and library components. With advance notification, you can address any potential concerns about the critical components of your entire library before they become an operational issue.

To ensure the viability of your data, Media Lifecycle Management (MLM) tracks and reports on health and security related statistics for Spectra Certified Media. Detailed reporting mitigates media problems and restore issues, allowing you to copy and move your data onto new media before degraded media affects your data.

For further integrity, MLM PreScan tape verification ensures that newly imported tapes are in good health and ready to use. After writing, MLM PostScan tape verification assures that your data is available on the tape by confirming there are no media errors.

Like MLM, Drive Lifecycle Management (DLM) extends the same proactive approach to drives by integrating tape drive analysis and reporting within the library. Using easy-to-manage, color-coded icons, you can quickly identify the health status of a drive. DLM also offers easy-to-use tape drive diagnostics to test and verify drive health and operation.

Managing the health of your library's critical components is made easy with Library Lifecycle Management (LLM). By delivering utilization metrics relative to the expected useful life of library robotics, filters and other critical components; you are able to service your library before issues occur.

Flexible growth and performance that meets your changing needs

Adding capacity to your T120 is simple with Capacity on Demand (CoD). Start with as few as 30 slots, and as your business expands add more capacity in increments of 15 TB or 5 tape slots (LTO-5, 2:1 compression). Adding tape drives and increasing performance is simple with easy-to-configure slide-in drives. This flexible scalability in capacity and performance protects your investment and ensures that your Spectra tape library is upgradable with the latest in technological advances. Additionally, Spectra's TranScale™ growth path allows you to expand to a larger library with the same interface and features— but with more capacity and performance.

End-to-End Buyer Protection



Seamlessly upgrade to larger libraries

- Investment protection with trade-in towards larger T-Series library
- Easy-to-use with same interface, core features and backup strategies



Assisted Self-Maintenance (ASM)



When a component does need replacement, Spectra gives you the option to do it yourself—without onsite support. ASM is an industry-first support option designed for environments where normal support services are available but not always feasible for specific customers (e.g. high-security facilities, mobile sites such as ships). ASM parts are stocked at your site, giving you the ability to make immediate repairs and eliminate the waiting periods associated with parts availability and onsite service calls.

Our Assisted Self Maintenance feature enables you to replace select parts yourself.

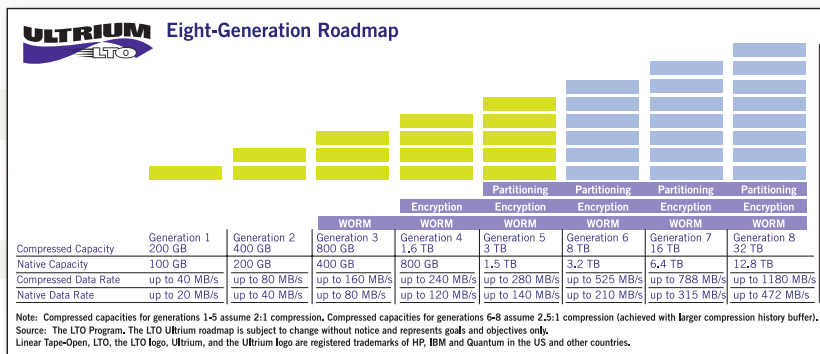
SpectraGuard Support

Support for Spectra T120 ranges from our standard worldwide next business day replacement to more advanced alternatives, including same day, four-hour onsite service or our exclusive Assisted Self-Maintenance option.

Our expertise comes from over 30 years of solving real problems with hands-on lab work and on-site technical support. Our support staff is cross-trained in the entire storage environment—not just hardware—so we can assist you with all aspects of a problem. From open to close, we are committed to resolving all your issues.



LTO Technology



LTO (Linear Tape-Open) Ultrium Technology is optimized for high capacity and performance with exceptional reliability in either a stand-alone or an automated environment. It uses a single reel cartridge to maximize capacity. Ideally suited for backup, restore, and archive applications, the LTO tape format establishes a new benchmark for large volume backup and archive. LTO technology will meet the needs of the enterprise through a single-server user with a roadmap and migration path that extends well into the next decade.

Product Specifications

Physical Characteristics

- Supports up to six full-height or ten half-height LTO drives (or a combination of full and half height drives)
- Fits into 14U rack space
- 24.5" H x 17.5" W x 36.5" D
- 62.2cm H x 44.5cm W x 92.7cm D
- Weight (approximate): 262 lb / 119 kg maximum

Power Requirements

- 9.4 Amps @ 120 VAC (maximum configuration) 50/60 Hz
- Frequency 50/60 Hz

Interface Options

- SAS 6 GB/s (LTO-5)
- Fibre Channel – 4 GB/s and 8GB/s

Reliability Statistics

- Mean Cycles Between Failures (MCBF): Over 1 million
- Mean Time Between Failures (MTBF): 250,000 power-on hours
- Mean Time to Repair (MTTR): 3 minutes for hot swap components, 30 minutes average for non-hot swap components

Capacity and Throughput

Media	Max Drives	Max Cartridges	Max Capacity*	Max Throughput*
LTO-5	10	120	360 TB	10.1 TB/hr
LTO-4	6	120	192 TB	5.2 TB/hr

* Values calculated using 2:1 data compression



Corporate Headquarters
46600 Landing Parkway
Fremont, CA 94538
tel 510.933.8300
fax 408.321.0293
www.sgi.com

Global Sales and Support
North America +1 800.800.7441
Latin America +55 11.5185.2860
Europe +44 118.912.7500
Asia Pacific +61 2.9448.1463