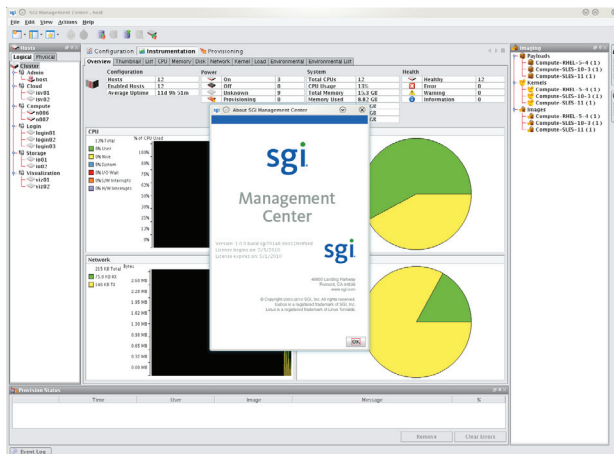


# SGI Management Center Standard Edition

A comprehensive system management console for monitoring your SGI computing system from a single point of control.



SGI Management Center – Standard Edition provides a single, consistent, and powerful management interface for SGI systems from individual servers to the largest clusters. SGI Management Center provides a comprehensive but customizable interface to monitor essential system metrics and initiate management actions from a single point of control. It reduces the time and resources spent administering the system by streamlining software maintenance procedures and automating repetitive tasks. The comprehensive features of SGI Management Center lower total cost of system ownership, increase productivity, and provide a better return on your SGI system investment.



SGI Management Center can display a single window showing rack layout, performance metrics, system statistics, and system health ...all at glance. The rich GUI allows full customization of the display with both physical and logical depiction of servers allowing administrators to display information as is most effective.

## Key Features & Benefits:

### High Performance Monitoring

SGI Management Center provides real-time analysis of over 120 essential system metrics from each server. Data is displayed in easy-to-read graphs, thumbnails, and tables. An information window provides instant, easy access to temperature, power and cooling data via the IPMI interface. SGI Management Center collects data from groups of servers to spot anomalies and allow you to drill down to a single server view to investigate problems. Monitoring is simple to configure through an easy-to-use interface. SGI Management Center also tracks the power and health state of each server and displays status using icons in a separate view throughout the user interface so system status information is always available.

### Automated Event Management

System thresholds can be set by the administrator on any set of the standard metrics. Automated management takes preemptive actions when system thresholds have been exceeded. Standard actions include logging health state messages, logging to files or serial consoles, sending emails, powering servers up or down, or running custom scripts. A simple-to-use Event Management interface makes configuration of thresholds simple. Custom plug-ins can be written to add functionality or monitor a specific device or application.



Feature	Details
<b>Integrated system management console</b>	Single point-of-control access to your entire system
<b>Full system health monitoring</b>	Over 120 selectable metrics from hardware and software sources for each server
<b>Centralized remote, server control</b>	Remote serial console access, KVM, power and beacon control using SGI Roamer, IPMI, and other interfaces
<b>Logical and physical reporting</b>	Aggregated reporting by server function, location, or other criteria
<b>Configurable dashboards</b>	Customizable, at a glance status of servers, racks, and entire systems
<b>Event management</b>	Selectable system event reporting and actions streamline system operations
<b>Bare-metal, high speed provisioning</b>	Multi-cast provisioning to all servers simultaneously minimizes startup time
<b>Fully flexible image management</b>	Individual control of kernels, distributions, applications, and file systems
<b>Version control</b>	Image version control built-in including rollbacks, import, and cloning
<b>Remote client access</b>	Full function Windows® and Linux remote management clients
<b>Scalability to the largest systems</b>	Scalability from 1 to 10,000s of servers or sockets
<b>User Management</b>	Add, modify, delete users, assign roles and add to groups

**Simple to Use**

An advanced GUI streamlines workflow by putting all common tasks into easily accessible locations. All actions can be achieved with just a few mouse clicks. SGI Management Center adds dockable drag-and-drop panels which can be arranged to create user dashboards that depict workflow. All options and preferences are easy to configure.

**Heterogeneous Platform Support**

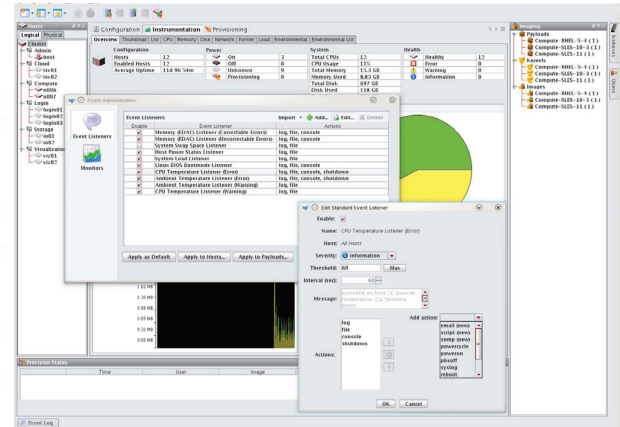
IPMI 2.0 support makes it easy to provide remote console access, power on/reset, and environmental monitoring including temperature, fan speeds, voltages and other metrics. SGI Management Center also supports SGI Roamer and a variety of third party platform management controllers.

**Requirements and Availability**

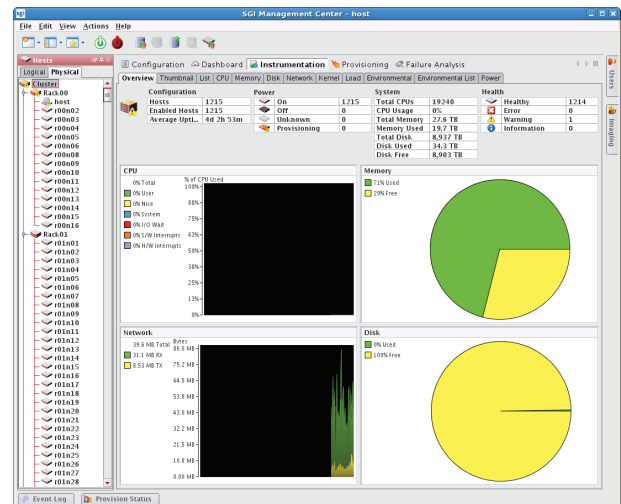
SGI Management Center—Standard Edition is included with your SGI Rackable™ and CloudRack™ servers.

SGI Management Center supports Novell SLES 10 and 11, Red Hat RHEL 5 and 6, and CentOS 5 and 6.

For even greater management functionality and control, upgrade your version of SGI Management Center at any time to Premium Edition and add power monitoring, memory fault analysis, high availability and GPU support. Both Standard and Premium Edition may also be enhanced with the addition of SGI Management Center Power Option for monitoring and policy driven dynamic management of system electrical load from individual servers through cabinets to entire systems. SGI Management Center Power Option requires underlying hardware support, which is available in Intel® Xeon® 5600-based servers having TY6 or TY15 motherboards, or for most Intel Xeon E5-2600-based servers, including SGI® ICE™ X.



*Managing an ever growing and complex set of potential system events has never been easier. Customizable event listeners can be established by the administrator specifying system events to be monitored, thresholds at which action is initiated, and multiple actions to be taken for any event ranging from sending email to a specific address, logging the event, to automated reboot or power cycling of servers. Responses to events are automated and administrators remain fully informed of actions, even when not at the system.*



*SGI Management Center scales with your SGI system. Here a system of almost 10,000 cores is monitored from a single window showing rack layout, performance metrics, system statistics, and system health ...all at glance. The rich GUI allows full customization of the display with both physical and logical depiction of servers allowing administrators to display information as is most effective.*

Global Sales and Support: [sgi.com/global](http://sgi.com/global)

