

SGI InfiniteStorage 3500

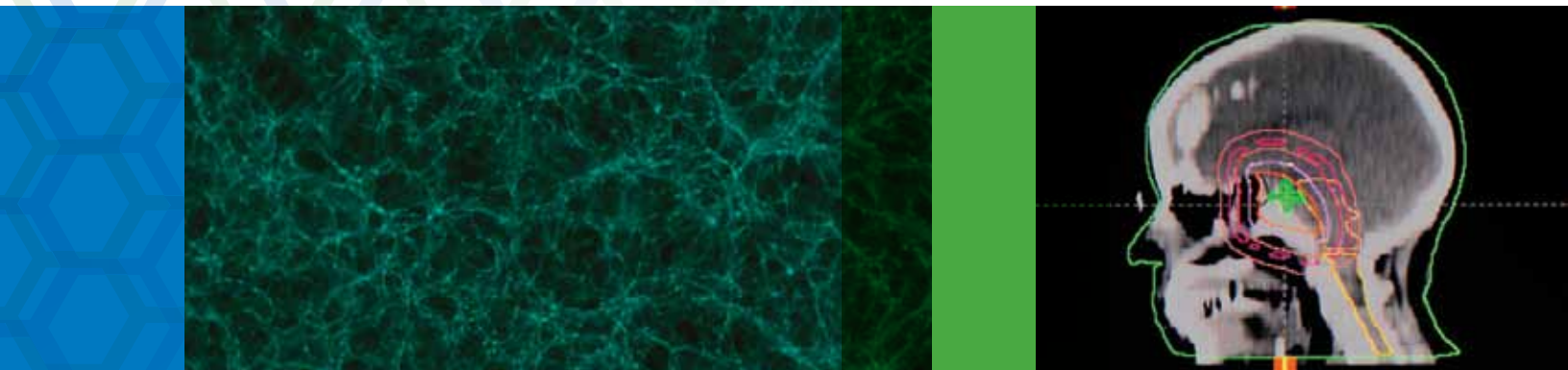
Cost Effective Storage Solution
for Ultimate Flexibility

KEY FEATURES

Extra high-density
4U Storage Chassis

High Efficiency power &
High Storage Capacity

High-availability Features



InfiniteStorage Server 3500 is an integrated storage server designed to provide a flexible, cost effective storage platform for a wide variety of customer needs. Built around dense packaging, this high performance system can pack up to 108TB in a single 4U system. With a choice of infrastructure connectivity, including Ethernet, InfiniBand, and 10Gb Ethernet, ISS3500 serves environments that require low-cost storage, but that cannot sacrifice performance.

High Performance, Small Footprint

As an integrated platform, ISS3500 is perfect for environments that need data and compute to be tightly coupled but also at a low price point. This includes, for example, HPC clusters, video surveillance, data warehousing or as an archive management platform. InfiniteStorage Server 3500 delivers the throughput required for high performance applications while minimizing the footprint, power and cooling requirements typically demanded by these scalable environments.

Flexible Configuration

Delivering a variety of storage protocols, including iSER, iSCSI, NFS and CIFs, ISS3500 is also well suited for video surveillance, data warehousing, and as an integrated building block for Hierarchical Storage Management (HSM).

ISS3500 is an open-architecture platform featuring the latest Intel® dual-socket processors to provide full x64 application compatibility. It is also bundled with the award-winning SGI XFS® file system, the industry leader in performance and scalability. Additionally, ISS3500 includes a choice of infrastructure connectivity including Ethernet, InfiniBand, and 10Gb Ethernet to enable maximum compatibility with existing environments.

Storage Tiering

With the ability to integrate multiple storage tiers— Tier Zero using Solid State Disk (SSD), Tier One using high performance SAS drives, and Tier Two using high density SATA—ISS3500 leverages SGI's own Data Migration Facility (DMF) to transparently migrate data to the right level of storage without user intervention. This ability to mix drive types allows this system to go beyond the limits of many storage solutions currently on the market, which may allow only one type of drive to be integrated in a single system.

ISS3500, in an efficient 4U chassis, features 36-drive bays for 3.5" or 2.5" SATA, SAS and SSD drives to pack up to 108TB into a single system. ISS3500 also includes high-availability features as standard, such as redundant power supplies and a redundant, hot-pluggable cooling system for maximum security in mission-critical data environments.

The Complete Package

InfiniteStorage Server 3500 is the latest in SGI's complete line of scale-up and scale-out storage hardware platforms and a rich suite of data management and software infrastructure software solutions.



Configuration Specifications

Form Factor	<ul style="list-style-type: none"> • 4U chassis support for motherboards up to size ATX, E-ATX, 13.68" x 13"
Processor Support	<ul style="list-style-type: none"> • Supports dual, single Intel® Xeon® 5500 and 5600 series • Chipset - Intel 5520
Memory	<ul style="list-style-type: none"> • Memory - Choice of up to 12 DDR3 DIMMs (4GB, or 8GB DIMMs)
Dimensions	
Rack Height	<ul style="list-style-type: none"> • 4 U
Height	<ul style="list-style-type: none"> • 7" (178 mm)
Width	<ul style="list-style-type: none"> • 17.2" (437 mm)
Depth	<ul style="list-style-type: none"> • 27.5" (699 mm)
Maximum Weight	<ul style="list-style-type: none"> • 80 lbs. (36.3 kg)
Expansion Slots	<ul style="list-style-type: none"> • 4 x PCIe x 8 gen 2 (low profile) • 1 x PCIe x 4 gen 2 (low profile) • 1 x PCIe x 4 gen 1 (low profile)
Integrated I/O	<ul style="list-style-type: none"> • 1 x COM port, 1 x VGA port, 2x GigE ports, 1 x BMC port
Internal Storage	<ul style="list-style-type: none"> • 36x (24 front + 12 rear) 3.5" or 2.5" Hot-swap HDD bays with SAS RAID—LSI Logic Fusion-MPT, LSI Logic MegaRAID
Video (Onboard)	<ul style="list-style-type: none"> • Matrox G200eW
Networking	<ul style="list-style-type: none"> • Dual GigE (Intel 82574L) onboard • Optional 10GigE, Quad port copper GigE, and QDR Infiniband.
Backplane	<ul style="list-style-type: none"> • HDD Backplane supports 36 SAS hard drives (24x front + 12 rear)
Front Panel	
Buttons	<ul style="list-style-type: none"> • Power On/Off button • System Reset button
LEDs	<ul style="list-style-type: none"> • Power LED • Hard drive activity LED • 2x Network activity LEDs • System Overheat LED • Power Fail LED

System Cooling	
Fans	<ul style="list-style-type: none"> • 7x 8cm hot-swap cooling fans • Redundant cooling
System Monitoring	<ul style="list-style-type: none"> • Chassis intrusion switch
Supported Drives	<ul style="list-style-type: none"> • SATA, SAS, SSD
Supported Operating Systems	<ul style="list-style-type: none"> • SLES 10 SP3, 11 • RHEL 5.4
Operating Environment (System)	
Operating Temperature Range	<ul style="list-style-type: none"> • 10 - 35°C (50° to 95° F)
Non-Operating Temperature Range	<ul style="list-style-type: none"> • -40 - +70°C (-40° to 158° F)
Humidity Range	<ul style="list-style-type: none"> • 8 - 90% non-condensing
Non-Operating Humidity Range	<ul style="list-style-type: none"> • 5 - 95% non-condensing
Power Supply	<ul style="list-style-type: none"> • 1400W high-efficiency power supply with PMBus
AC Input	<ul style="list-style-type: none"> • 1100W: 100 - 140V, 50 - 60Hz, 9.5 - 13.5 Amp • 1400W: 180 - 240V, 50 - 60Hz, 7.0 - 9.5 Amp
DC Output +5V standby	<ul style="list-style-type: none"> • 4 Amp
DC Output +12V	<ul style="list-style-type: none"> • 92 Amp @ 100-140V • 116 Amp @ 1 80-240V
With Distributor	<ul style="list-style-type: none"> • +5V: 30 Amp • +3.3V: 24 Amp • -12V: 0.6 Amp
Certification	<ul style="list-style-type: none"> • 80 PLUS Gold Certified
Regulatory (Power Supply)	
Power Supply Safety / EMC	<ul style="list-style-type: none"> • USA - UL listed, FCC • Canada - CUL listed • Germany - TUV Cer tified • Europe/CE Mark • EN 60950/IEC 60950-Compliant



Global Sales and Support: sgi.com/global

©2012 Silicon Graphics International Corp. All rights reserved. SGI and the SGI logo are registered trademarks or trademarks of Silicon Graphics International Corp. or its subsidiaries in the United States and/or other countries. 03022012 4214

