

SGI InfiniteStorage 15000

High-Performance Storage with Breakthrough Scalability, Density, and Energy Efficiency

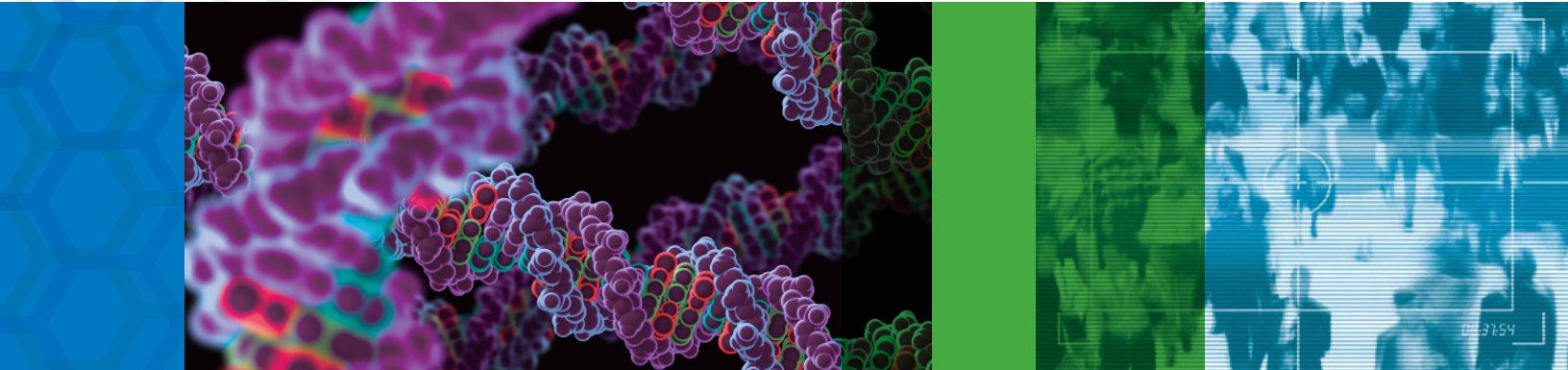
KEY FEATURES

Maximum bandwidth for HPC performance

Scale massively to 3.6PB

Industry leading density

Tiered Storage



The SGI InfiniteStorage 15000 overcomes performance barriers to meet the needs of the most bandwidth-sensitive applications. System capacity, within a very small footprint, provides the head room required for data growth. And an innovative MAID implementation makes the SGI InfiniteStorage 15000 an environmental- and data center-friendly solution with the ability to reduce energy consumption, cooling requirements, and overall cost of ownership.

Ideally Suited for Bandwidth Intensive Applications

Purpose-built for applications that require immediate access to large data sets, the SGI InfiniteStorage 15000 storage solutions ideally suit:

Rich media, with no dropped frames and the ability for one controller to support multiple 2K or 4K data streams (reducing the number of controllers required) and massive archives.

High-performance computing (HPC), with balanced read/write performance – up to 6GB/sec in either direction.

Applications within energy, digital content, satellite communications/surveillance, and other data-intensive industries, where the SGI InfiniteStorage 15000 can power large data sets, real-time streaming, and fast access to immense repositories.

Small Footprint with Headroom for Growth

The high-performance SGI InfiniteStorage 15000 offers unmatched scalability and a compact package. The resulting capacity—up to 3.6PB behind a single system and in only two racks—provides an attractive solution for today's

space-restricted data centers. The resulting density is almost four-times that of the competitors, making it one of the most space-efficient solution on the market. The enclosures support ultra-dense 4U packaging.

Flexibility to mix SAS and SATA Drives in a Single System

The configuration flexibility of the SGI InfiniteStorage 15000 allows storage managers to choose the best solution for each application. Mixing performance-centric SAS and capacity-centric SATA disk drives in a single enclosure supports today's tiered storage architectures and shields users from complexity while meeting their performance requirements.

Highest Reliability SATA Solution

Integrated SATAAssure features increases the reliability of large pools of SATA drives without requiring degrading performance:

Parity checks on both reads and writes to detect and correct “silent” data corruption.

RAID 6 protection against double disk failures in each tier.

Multiple autorecovery attempts before taking a drive offline.

Ability to power cycle individual drives.

Performance penalty-free drive rebuilds for up to four drives per controller (partial rebuilds).

Supports partial rebuilds.

Configuration Specifications

Rack 40U Dimensions	<ul style="list-style-type: none"> • Host Interface Technology: DDR InfiniBand or 8Gb FC • Number of Host Ports: 8 • Back-end Channels: 20 • Parity: Dual Parity, 8+2 • Cache: 5GB RAID protected • Throughput: Sustained reads and writes up to 6.0GB/s
System Features	<ul style="list-style-type: none"> • Up to twenty 4U drive enclosures each with 60 drive bays • Mix high performance SAS drives with high capacity SATA drives • Up to 3.6PB per single system • Two redundant hot swappable cooling modules • Four redundant hot swappable power supplies
Standard Software Features	<ul style="list-style-type: none"> • Integrated software with no external host installation required for: LUN Mapping and Masking by WWN and/ or Port Zoning; Power LUNs; Real-time DATA Verification; Background Data Scrubbing; LUN in Cache; Place Holder LUNs; Intelligent Stream Detection; ReadOnly LUNs, Advanced A/V Modes, DirectMirror LUN Caching, Direct API
Optional Host Software	
CXFS	<ul style="list-style-type: none"> • Heterogeneous shared file system for storage area networks; eliminates the need for replication of data across a network by allowing multiple users to share one version of content at Fibre Channel or InfiniBand speeds
DMF	<ul style="list-style-type: none"> • Data Lifecycle Management (Archive) policy automation software virtualizes storage devices and automates the migration and archive of digital content throughout a virtual tiered storage pool based upon business policies
Warranty	<ul style="list-style-type: none"> • 2 year 5x9 hardware parts and labor warranty with on-site Next Business Day response standard; upgradable to multi-year, 7x24, 2 hour response

NOTE: Due to the dimensions and weight of the system, the SGI InfiniteStorage 15000 will only be supported in the specified racks

NOTE: All dimensions and weights are approximate



Controller Environmental Specifications	
Height	• 7", 17.8 cm, 4 EIA Units
Width	• 19", 48.3cm
Depth	• 31", 78.8 cm (including front bezel)
Weight	• 90 lbs, 41.0 kg
Power	• 1100 W/5.3A Max, 800 W/3.8A Ave
Cooling	• 3756 BTU/h Max, 2730 BTU/h Ave
Peak Airflow	• 280 cfm
Voltage Range	• 85-264VAC
Operating Environment	• 50° F to 95° F (10° C to 35° C)
Non-Operating	• -14° F to 122° F (-10° C to 50° C)
Drive Enclosure Specifications	
Rack Height	• 4U
Height	• 6.97", 177 mm
Width	• 16.56", 420.6 mm
Depth	• 38", 965.2 mm
Weight	• 215 lbs., 97.50 kg (full)
Rack Specifications*	42U 45U
Height	• 42", 105 cm • 86", 218 cm
Width	• 28", 71.1 cm • 28", 71.1 cm
Depth	• 79.5", 200 cm • 42", 105 cm
Weight	• 325 lbs, 148 kg • 350 lbs, 159 kg
AC Power	• 208/230V • 208/230V
L6-30p Plugs	• 4 • 8
Number of Outlets (internal)	• 32 • 64
Certifications	• UL, CE, CUL, C-Tick, FCC, RoHS Compliant