

The Ultimate CFD Analyst System

SGI® Altix® 4700 Supercomputer

Superior Performance Density • Investment Protection

The **SGI® Altix® 4700** supercomputer is the ultimate system to run your most demanding CAE applications. This powerful computer uses an innovative modular blade design for superior performance density (a teraflop per small footprint rack) and NUMALink™ interconnect technology, which leads the industry in bandwidth and latency for best performance on cluster applications.

For the months May through July, add your own 32-socket SGI Altix 4700 server with 32 Intel® Itanium® 2 processors (1.6GHz/6MB), 146GB SAS drive, and 32GB of global shared memory — for the incredible low price of...

\$155,219 (USD)

And you get the...

- Powerful combination of Intel Itanium 2 processors and the Linux® OS (Novell® SUSE® LINUX Enterprise Server 9 or Red Hat® Enterprise Linux® 4)
- Turbo-charged CAE application performance with SGI® ProPack™4 for Linux
- 1 Year of SGI® FullCare™ support
- A system that will grow with your needs: expandable to 78 sockets per rack, easy upgrade or expansion of memory (up to 1.8TB per rack), I/O or visualization capabilities
- A platform designed to be socket-compatible with dual-core Intel Itanium 2 processors providing excellent investment protection with performance gains of 2X when upgrading to Montecito and more with follow-on Montvale

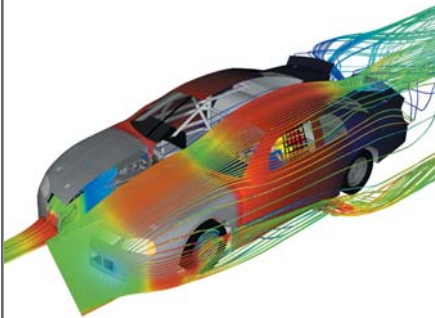


Image courtesy of Advantage CFD
(www.advantage-cfd.co.uk)
Image produced with CEI's EnSight

Don't miss out on this special pricing...

Please call 1-800-800-SGI1 (7441), e-mail us at leads@sgi.com or contact your authorized local SGI partner.



Corporate Office
1500 Crittenden Lane
Mountain View, CA 94043
(650) 960-1980
www.sgi.com

North America +1 800.800.7441
Latin America +55 11.5509.1455
Europe +44 118.912.7500
Japan +81 3.5488.1811
Asia Pacific +1 650.933.3000