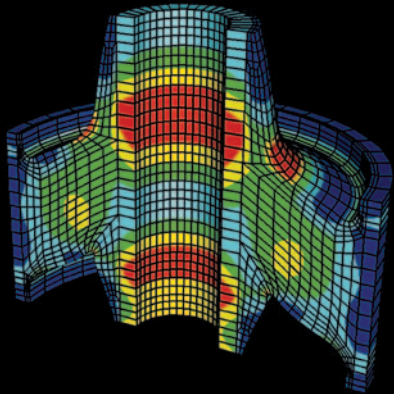


# The Perfect FEA Starter System...



## SGI® Altix® 330 Server

Low price • Mid-range • High performance



The **SGI® Altix® 330** is the perfect system to run your most demanding CAE applications. This powerful system delivers maximum performance and its unique modular architecture allows you to independently add processors, memory and/or I/O to cost-effectively expand the system as future budgets become available.

For the months of January and February, add an SGI Altix 330 with 2 Intel® Itanium® 2 processors (1.5 GHz/4 MB), 8 GB of memory, two - 250 GB SATA2 drives, internal DVD-ROM – for the incredible low price of...

**\$8,495.00 (USD)**

### And you get the...

- Powerful combination of Intel Itanium 2 processors and the Linux® OS (Novell® SUSE® Linux Enterprise Server or Red Hat™ Enterprise Linux).
- Turbo-charged CAE application performance of SGI ProPack 4™ for Linux® or SGI Advanced Linux Environment w/ SGI ProPack 3™.
- A system that will grow with your needs, expandable to 16 processors and 128GB memory and is easily clustered.

**Don't miss out on this special pricing...**

Please call 1-800-800-SGI1 (7441), e-mail us at [leads@sgi.com](mailto:leads@sgi.com) or contact your authorized local SGI partner.



Corporate Office  
1500 Crittenden Lane  
Mountain View, CA 94043  
(650) 960-1980  
[www.sgi.com](http://www.sgi.com)

North America +1 800.800.7441  
Latin America +55 11.5509.1455  
Europe +44 118.912.7500  
Japan +81 3.5488.1811  
Asia Pacific +1 650.933.3000