

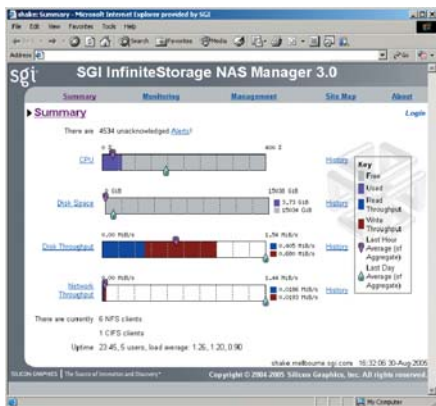
SGI® InfiniteStorage NAS 330

Features

- Enterprise-class, workgroup price
- Superior features and performance
- Scalability supports your growth
- Simple, powerful administration
- Support you can count on



SGI InfiniteStorage NAS 330 – maximum configuration



SGI InfiniteStorage NAS Manager – GUI

Enterprise-Class, Workgroup Price

The NAS 330 delivers enterprise-class features and performance usually only found in much larger and more expensive network-attached storage (NAS) offerings.

This combination of capability and price/performance makes the NAS 330 a strong departmental file serving solution. Ideal environments for the NAS 330 are those with data-intensive applications such as media streaming, file serving to clusters, file serving to heterogeneous systems and consolidating multiple small filers.

Superior Features and Performance

The NAS 330 has the power to tackle different types of workflows. While most NAS offerings are optimized for either IOPs or bandwidth-intensive applications, NAS 330 delivers high-performance for both.

Many NAS products do not include even the most basic features needed for real performance and management. The NAS 330, on the other hand, comes standard with network, volume and filesystem management, integrated RAID manager, e-mail alerts and file serving and network protocol software all included. This means that if your environment changes – for example you add Mac OS® or Linux® systems to your Windows® environment – all the tools you need to address those changes are already available at no extra charge with the NAS 330.

Additional NAS 330 features available at a premium include snapshot, asynchronous remote replication, and high-availability cluster failover.

Scalability Supports Your Growth

Scale performance, connectivity and capacity with complete investment protection. With the NAS 330 you can start with an entry configuration and scale in any direction without the need for data migration. Most filers require a forklift upgrade to scale; the NAS 330 is completely pay-as-you-grow, allowing you to double performance, and add capacity to over 16TB in the same platform. So, as your business and requirements grow, your NAS 330 capabilities can grow to support you.

Simple, Powerful Administration

The simple, powerful and secure graphical user interface (GUI) included with the NAS 330 delivers all the installation, configuration and administration functionality usually reserved for a much more expensive product.

Using the GUI, NAS 330 installation can be accomplished in as little as 15 to 30 minutes. Quick view summaries show overall system health. Drill down capabilities for the filesystem and on file serving protocols (NFS, CIFS) show where system load is being generated. Historical data tracking allows for very granular administration and problem diagnosis as needed. Detailed reporting and built-in alerts simplify administrative functions. These features, accessible simply and intuitively through the management GUI, mean storage administration does not have to be a full-time job.

Support You Can Count On

The NAS 330 is backed by a one year, 5x9, next business day, on-site warranty on parts and labor. Support is delivered by SGI Service and Support, which is consistently ranked among the highest in the industry.



SGI InfiniteStorage NAS 330

Technical Specifications



	NAS 330 Entry	NAS 330 Mid
Capacity (TB)	2.8 to 16.8	2.8 to 16.8
CPU	2	4
System memory (GB)	8	8 to 16
GigE connections	2	4
4Gb FC connections	2	2
Optional PCI-X slots	4	4

Environmental (Operating)

Temperature

- +5°C to +35°C, altitude 5,000 MSL
- +5°C to +30°C, altitude 10,000 MSL

Environmental (Non Operating)

Temperature

- -40°C to +60°C

Humidity

- 10% to 95% non-condensing

Altitude

- 40,000 MSL

Electrical and Power

Power Supply

- NAS 330 Head: one standard 550W power supply
- Storage Modules: redundant, hot-swappable power supplies

Voltage

- 200-240 VAC (North America/Japan)
- 230 VAC (International)

Electromagnetic Compliance

- EN 55022 Class A EN 50024:1998
- FCC Class A VCCI Class A

Safety Compliance

- UL 1950 CSA 22.2 No.950 IEC 950 EN 609

Power Consumption

- Enclosures with controllers and 14 drives:
- Max. Operating Current - 3.18A, 318W
- Max. Surge Current - 5.85A, 585W, 100VAC, 60 Hz, 0.73 power efficiency, 0.99 power factor

Software

Storage Management Software

- Simple and powerful web based monitoring and management user interface
- XFS® high-performance 64-bit journaled filesystem for SGI® IRIX® and Linux system platforms
- XVM Volume Manager: virtualization technology to organize logical data structures for high performance and ease of management
- NFS (UNIX® clients file serving)
- CIFS (Windows client serving)
- TCP/IP
- Dynamic capacity and volume expansion
- Performance monitoring
- Non-disruptive upgrades

Software Options

High Availability

- Cluster Manager high-availability software, redundant data manager (cluster configuration)
- XVM snapshot incremental backup technology
- Remote asynchronous replication
- Embedded Support Partner 7x24 proactive system monitoring and automatic rule-based failure notification to SGI support personnel

Backup

- NAS 330 backup options available from SGI and fully supported include EMC Legato NetWorker® and Atempo's Time Navigator™
- Third-party backup options available from their respective manufacturers include VERITAS NetBackup™ and backup solutions from Arkeia®

Storage Modules

Features

- Two or four Fibre Channel host connections
- Redundant, hot-swappable storage controllers, disk drives, power supplies, cooling fans
- Cache 256MB per controller
- Cache battery backup
- RAID 5: default 6+1 for RAID5 group
- **Storage Module Maximum Bandwidth**
- 800MB/s aggregate bandwidth from cache
- 400MB/s sustained from media

Dimensions

NAS 330 Head

- Entry (1U): 1.7" H, 17.5" W, 31.75" D (4.3 cm H, 44.5 cm W, 80.6 cm D) with bezel; Weight: 38 lbs (17.27 kg)
- Mid (2U): 3.4" H, 17.5" W, 31.75" D (8.6 cm H, 44.5 cm W, 80.6 cm D) with bezel; Weight: 76 lbs (34.52 kg)

Storage Controller Enclosure

- Height (3U): 5.1" (12.9 cm)
- Width: 17.5" (44.5 cm)
- Depth: 22.1" (56.1 cm)
- Weight: 62 lb (28.2 kg)

Drive Enclosure

- Height (3U): 5.1" (12.9 cm)
- Width: 17.5" (44.5 cm)
- Depth: 22.1" (56.1 cm)
- Weight: 88 lb (40 kg)

Support and Services

- SGI provides full support for NAS 330, its hardware and its system software. SGI also offers services to implement and integrate services in your environment. For more information, please contact your SGI representative.



Corporate Office
1500 Crittenden Lane
Mountain View, CA 94043
(650) 960-1980
www.sgi.com

North America +1 800.800.7441
Latin America +55 11.5509.1455
Europe +44 118.912.7500
Japan +81 3.5488.1811
Asia Pacific +1 650.933.3000