

An Inside Look at What's Driving Innovation with SGI® Altix® Software Offerings



More Innovation

A glowing DNA double helix structure is shown against a dark blue background. The two strands are colored in a gradient from light blue to pink, and they are connected by vertical lines representing base pairs. The overall appearance is that of a digital or scientific visualization.

More Advancements

A dramatic scene of lightning bolts striking against a dark purple and blue sky. The lightning is bright white and yellow, creating a powerful and energetic atmosphere.

More Breakthroughs



It's All About The Advantage



SGI designs its Linux® operating system (OS) software offerings specifically for demanding, high-performance computing. These industry-standard, fully supported software solutions leverage SGI's extensive experience in scaling, data handling, and large-system management. SGI brings you the flexibility of the Linux OS backed by 20 years of high-performance computing research and development to solve your toughest problems quickly and effectively.

Working closely with the open source community, SGI has developed enhancements to Linux OS scalability, memory usage, I/O, and other features to drive optimal performance on demanding applications. These and other SGI innovations have helped maximize computing productivity on the Linux OS, and will expand your choice of operating systems, applications, and configurations.

SGI® Altix® Servers and Linux OS: Optimized for HPC



It's All About Choice

Linux® OS Options From SGI Features

Required Features	SGI Advanced Linux™ Environment with SGI ProPack™ 3	SUSE® LINUX Enterprise Server 9	SUSE® LINUX Enterprise Server 9 with SGI ProPack™ 4	Red Hat® Enterprise Linux™ 4
Standards	LSB 1.3	LSB 1.3 LSB 2.0 planned	LSB 1.3 LSB 2.0 planned	LSB 1.3 LSB 3 in progress
≤ 64p	Yes	Yes	Yes	Yes
> 64p	Yes	Yes	Yes	No
Support	SGI L1-3 through end of 2005	SGI L1-3 with Novell Web-based updates and upgrades including major releases	SUSE LINUX Enterprise Server 9: SGI L1-3 support with Novell Web-based updates and upgrades SGI ProPack software feature for Linux OS: SGI L1-3	Red Hat—all levels
Compatibility	Red Hat™ Enterprise Linux Advanced Server 3 2.4.21 kernel	2.6.5+ kernel	2.6.5+ kernel	2.6.9+ kernel*
Security	No plans for CAPP certification	PAM, LDAP, Kerberos, LaUS	CAPP@ EAL/3+ planned by SGI LSPP available after 6/06	SELinux support including SSL, IpSec, MAC
CXFS™ Needs to run with SGI ProPack software feature for Linux OS	Yes	No, but supports XFS®	Client Planned 07/05	No
Graphics	Silicon Graphics Prism™ visualization system Support in SP5-12 pipe		SUSE LINUX Enterprise Server 9, SP2 planned for 8/05 (16 pipe)	No
Real-time	No		2-32p support now ULI, FRS planned for 8/2005	No

* Compatible with Red Hat™ Enterprise Linux Advanced Server 3 when using core C++ and C libraries (compat-ibstdc++ and compat-gcc)

Linux OS for HPC

Linux OS

SGI delivers scalable shared memory systems and clusters to let you take full advantage of this high-performance operating system.

The power of the Linux OS delivers a competitive advantage to developers with cost-effective, multi-platform support for easy-to-deploy programming and implementation.

The Linux OS allows access to a broad availability of open-source applications for data-intensive commercial workloads and end-users alike.





It's All About Having The Right Tools

SGI innovations on the Linux OS include enhancements to scalability, scheduling, memory usage, I/O, and other attributes critical to high-demand application performance. The advanced Linux OS development environment for the SGI Altix family of servers maximizes these capabilities. It delivers access to global shared memory across cluster nodes, the powerful SGI NUMAflex™ architecture, industry-standard compliance, and high-performance I/O capabilities for commercial, open-source, and development software.

The SGI development environment features the powerful Intel Software Development Products, which allow users to achieve optimal application performance on their Intel® Itanium® 2 processor-based SGI Altix systems. Intel software tools work with a variety of development environments, operating systems, and industry standard development tools.

Tools To Get The Job Done

Compilers:

- Intel C++ Compiler for Linux
- Intel Fortran Compiler for Linux
- GNU Compiler for C and Fortran 77

Libraries:

- SGI Message Passing Toolkit (MPT)
- SGI Scientific Computing Software Library (SCSL)
- SGI Flexible File Input/Output (FFIO)
- Intel Math Kernel Library (Intel MKL)
- Intel Integrated Performance Primitives (Intel IPP)
- NAG C, Parallel, Fortran, Fortran SMP, Fortran 90 Libraries

Debuggers:

- Intel Debugger
- Etnus® TotalView®
- GNU GDB
- Allinea Software Distributed Debugging Tool (DDT)

Performance and Application Analysis Tools:

- Intel VTune™ Performance Analyzer
- Intel Trace Analyzer and Intel Trace Collector
- SGI Performance Co-Pilot™
- SGI pfmon and profile.pl
- SGI Histx

Automated Parallelization Tools:

- Parallel Software Products ParaWise

Open Source Development Tools:

- Linuxlinks.org, Freshmeat.net, SourceForge®.net

It's All About Performance

Linux™ OS Options—SGI Performance Enhancements

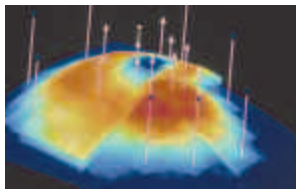
Additional Features	SGI Advanced Linux™ Environment with SGI ProPack™ 3	SUSE® LINUX Enterprise Server 9	SUSE® LINUX Enterprise Server 9 with SGI ProPack™ 4	Red Hat® Enterprise Linux® 4
Max. Memory	Up to 32 TB per system	Max. RAM for SUSE LINUX Enterprise Server 9: Theoretical—1 petabyte Practical—4 terabytes	Up to 32 TB per system	128 GB for Itanium 2 processor (tested limit) 32 TB claims are theoretical
Hardware Extensions	Voltaire IB support	USB 2.0 with bandwidth for up to 480 megabytes per second IB support* (via Voltaire)	USB 2.0 with bandwidth for up to 480 megabytes per second IB support* (via Voltaire)	USB-supported for Flash media, CD-ROM and DVD Emulex LightPulse Fibre Channel driver included (unsupported) IB support (via Topspin)
Intel Compilers and Tools	Performance enhancing C/C++ and Fortran compilers, debugger, MKL libraries, Intel VTune™ performance tuning	Performance enhancing C/C++ and Fortran compilers, debugger, Intel VTune™ performance tuning	Performance enhancing C/C++ and Fortran compilers, debugger, Intel VTune™ performance tuning	No support at this time
GCC Compiler and Tools	GCC 3.2.3	GCC 3.2.3 includes tools for C/C++/Fortran77/Java/Ada/objective-C	GCC 3.2.3 includes tools for C/C++/Fortran77/Java/Ada/objective-C	GCC 3.4 includes tools for C/C++/Fortran77/Java/Ada/objective-C GCC 4 includes support for C++/Fortran/Java (unsupported)
ProPack Performance Package	MPT, SCSL, Cpuset, SGI Performance Co-Pilot™, CSA, FFIO, ESP	No	MPT, SCSL, Cpuset, SGI Performance Co-Pilot™ CSA FFIO, ESP	No
File Systems	XFS, CXFS	Ext2 & 3; Reiser, XFS, Lustre (unsupported), JFS	Ext2 & 3; Reiser, XFS, Lustre (unsupported), JFS	Ext2 & 3, CIFS, FAT, SMBFS, UDF, JFS2, LVM, NFS

SGI ProPack™ Software Feature for Linux OS

The SGI ProPack software feature for the Linux OS includes capabilities and performance improvements ideal for enabling technical and creative users to solve their big compute and data problems by using the Linux operating system and Intel® Itanium® processors.

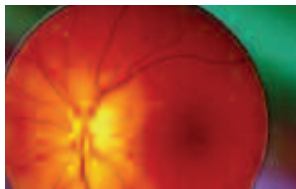
SGI ProPack 4 software is the first version of SGI ProPack 4 to be certified by SGI and fully supported on SUSE LINUX Enterprise Server OS. SGI ProPack 4 software feature for Linux OS includes scientific libraries, NUMAflex technology tools, and other improvements intended to augment a Linux OS base distribution. Users can expect to obtain application performance advantages similar to those obtained when running the SGI Advanced Linux Environment OS with SGI ProPack 3.

Applications Optimized For Every Industry



Energy

Solutions for optimizing exploration and production decisions



Sciences

Solutions ranging from weather forecasting to drug design, and everything in between



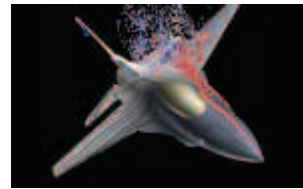
Manufacturing

Solutions for aerospace, automotive, consumer products manufacturing, and more



Horizontal Software

Solutions for application development, database management, and more



Government

Solutions for government agency and defense decision-makers



Media

Solutions for creating and managing digital content for film and broadcast

- 3DGeo Development Inc. COMAZ
- ABAQUS Inc. ABAQUS/Explicit*
- ABAQUS Inc. ABAQUS/Standard*
- Accelrys Materials Studio*
- AccGain EAN Cluster Management
- ACUSIM Acusolve*
- ADINA R&D, Inc. ADINA*
- AeroSoft/GASP
- Allinea Software Ltd. DDT
- Allair Engineering PBS Pro
- Allair* OptiStruct*
- ANSYS Inc. ANSYS*
- ANSYS Inc. TASCflow
- ApplQ Storage* Authority* Suite
- Arkeia* Network Backup
- Atempo Time Navigator*
- Auckland Univ. CMSS
- AutoForm
- AVL Fire
- AVL SWIFT
- BakBone Software* NetVault*
- BEA Systems BEA WebLogic (Rockit)
- The BioTeam iNquiry
- Boeing BCSLIB
- Brocade SilkWorm family of switches
- CCLRC Crystal
- CD/Adapco STAR CD
- CDH CDHopt
- CDH DSVGI
- CFDRC CFD-ACE
- CFX (a business unit of ANSYS Inc.) CFX-5
- CHAM Ltd. PHOENICS
- Crescent Bay Software VASTtoOpenMP
- CWB GFS
- DKRZD EHCAMS
- DNSC CP90
- DNSC FPMO/ESPRESSO
- DWD LM
- ECMWF, Meteo-France IFS
- EMBL-EBI GeneWise
- EMBL-EBL Wise2
- EMC Legato* NetWorker* Family
- Empress Software Inc. Empress RDBMS
- EMSS FEKO
- ESI Group PAM-CRASH
- ESI Group PAM-FLOW
- ESI Group PAM-GEN
- ESI Group PAM-MEDYSA 2G
- ESI Group PAM-SAFE
- ESI Group PAM-STAMP 2G
- ESI Group/CFDRC CFD-FASTRAN
- Etnus TotalView*
- Exa PowerFLOW*
- Fluent FIDAP
- Fluent FLUENT
- Fluent POLYFLOW
- Fluent Tgrid
- Gamma Technologies GT-POWER
- Gaussian* 98 and Gaussian 03
- GenaWare GenaMap
- Gene-IT Biofacet
- GeoCenter SatsUP
- GOTS CTH
- HGMP-RC Emboss
- HIRLAM Consortium
- HKL HKL-2000
- IBM* Informix* Dynamic Server (IDS)
- IBM* DB2 Universal Database
- ICEM CFD Engineering ICEM CFD
- IFP Althos
- Integrated Sensors, Inc. RTExpress*
- Intel* Math Kernel Library
- Intel* C++ Compiler for Linux
- Intel* Fortran Compiler for Linux
- Intel* Integrated Performance Primitives
- Intel* VTune* Performance Analyzer
- Intel* Trace Analyzer
- Intel* Trace Collector
- Intelligent Light FIELDVIEW
- INTES PERMAS
- Iowa State Univ. CAP3
- Iowa State Univ. GAMESS
- LANL DICE
- LANL Solve/Resolve
- LANL, NCAR Parallel Ocean Program (POP)
- LMS SYSDISE
- LSI Logic TP9500
- LSTC LS-DYNA
- MICALOG RADIOSS
- MICALOG RADIOSS-CFD
- mental images* mental ray*
- Metacomp Technologies CFD++
- Meteo-France ALADIN
- Moldflow* Corp. Moldflow Plastics Insight
- MPSoC/IBM* CPND
- MSC Software Corp. Mental*
- MSC Software Corp. MSC SuperForm*
- MSC Software Corp. MSC Dytran*
- MSC Software Corp. MSC Marc*
- MSC Software Corp. MSC Nastran*
- Multipath Corp. FMSLib
- MySQL* AB
- Nabla Ltd. FOAM
- NAG* Libraries (C, Fortran, Fortran 90)
- NAG* Parallel Library
- NAG* SMP Library
- NAG* NAGWare FPS Compiler
- NASA Ames Cart3D
- NASA ECCO
- NASA LaRC CFL3D
- NASA LaRC USM3D
- NASA LaRC VULCAN
- NASA OVERFLOW
- NCAR CAM
- NCAR CCM3
- NCAR CCSM
- NCAR WRF (JMcCore)
- NCAR WRF_CHEM
- NCAR/MMM MMS
- NCBI BLAST* (NCBI-BLAST)
- NCEP GFS
- NCEP WRF (JMM)
- NERSC PARATEC
- Nextlimit Maxwell
- NPARC Wind-US
- NWCHEM NWChem
- Objectivity Objectivity/DB
- OpenEye Scientific Software Case Toolkit
- OpenEye Scientific Software EON
- OpenEye Scientific Software FILTER
- OpenEye Scientific Software FRED
- OpenEye Scientific Software OEChem
- OpenEye Scientific Software OGHAM
- OpenEye Scientific Software OMEGA
- OpenEye Scientific Software QUAC PAC
- OpenEye Scientific Software ROCS
- OpenEye Scientific Software SHAPE Toolkit
- OpenEye Scientific Software SMACK
- OpenEye Scientific Software SZYBK1
- OpenEye Scientific Software VIDA
- OpenEye Scientific Software WABE
- OpenEye Scientific Software Zap
- OptimaNumerics OptimaNumerics Libraries (LAPACK, ScalAPACK, PETSc, PLGF, SPRNG)
- Oracle/Oracle Application Server (by Oracle?)
- Paradigm Geophysical GeoDepth (Epos 3.0)
- Parallel Software Products ParaWise
- Platform Computing LSF
- Program Development Corp. GridPro
- Q-Chem Inc. Q-Chem
- Ricardo Vectis
- Ricardo WAVE
- Robert Duke-UNC Amber (PMEMD)
- SAIC OMEGA
- SAIC SIGLBC*
- SAIC Xpatch*
- SAIC/GMU FEFL0
- SAMTECH sa SAMCEF Linear
- SAMTECH sa SAMCEF Mecano
- SAMTECH sa SAMCEF Thermal
- SAMTECH sa TEA Mecano
- Scali Manage
- Schlumberger ECLIPSE 100/300
- Schrodinger Jaguar
- SCM ADF
- SCM BAND
- Scripps Charmm
- Scripps Research Institute AutoDock
- Southwest Parallel Software SPS CrossMatch
- Southwest Parallel Software SPS Pfam
- Southwest Parallel Software SPS Phrap
- Southwest Parallel Software SPS SWAT
- SteelEye Technology* LiteKeeper*
- Sybase* Adaptive Server Enterprise (ASE)
- Tedial Tarsys
- TIBCO Rendezvous*
- TNO Automotive MADYMO (serial version)
- Transact-in-Memory P*TIME
- T-Systems MEDINA
- U. Miami HYCOM
- UCAR NeICDF
- UCSF/Scripps Research Institute Amber (Sander)
- UGS NX Nastran*
- UIUC NAMD
- Univ. of Birmingham Molpro
- Univ. of Groningen GRDMACS
- Univ. of Oklahoma ARPS
- Univ. of Pisa Pwscf/ESPRESSO
- Univ. of Strasbourg ClustalW
- Univ. of Virginia FASTA
- Univ. Wisconsin/Berkeley Bioconductor
- University of Cambridge CCP4
- University of Texas AMLS
- University of Vienna VASP
- VIPS Ltd. VISAGE
- Visual Numerics IMSL* C Numerical Library (CNL)
- Visual Numerics IMSL* Fortran Numerical Library
- Washington Univ. BLAST* (WU-Blast)
- Washington University in St. Louis HMMER
- Wavefunction Spartan
- Willow Technology IBM WebSphere* MQ
- Wolfram Research gr8Mathematica* 2
- Wolfram Research Mathematica*
- Xcelerix Technologies Xcelerix* IMDB Accelerator

SGI for Solid Support

After more than 20 years in the high-performance and technical computing fields, we've developed the best support organization in the business. We specify, configure, and fine-tune the ideal solution for your business, and support an extensive catalog of Linux applications and middleware.

Put the Power of SGI and the Linux OS to Work for You

Find out more about SGI's Linux OS offerings at: <http://www.sgi.com/products/software/linux/> or call 800.800.7441

Learn more about Linux OS technology from SGI at: www.sgi.com/products/servers/res_ctr/

Create world-class software applications by using the extensive suite of software development tools from Intel.

Learn more about Intel software development products at: www.intel.com/software/products

Linux penguin, images of SGI servers, and images for Manufacturing, and Sciences courtesy of Silicon Graphics, Inc. Image for Energy courtesy of Intera. Double helix image, images of man and woman in safety glasses, and image for Media, courtesy of Getty Images. Cloud and lightning images courtesy of iStock. Government image courtesy of VRContext n.a./s.v.



Corporate Office:
1500 Crittenden Lane
Mountain View, CA 94043
(650) 960-1980
www.sgi.com

North America +1 800.800.7441
Latin America +55.11.5509.1455
Europe +44.118.912.7500
Japan +81.3.5488.1811
Asia Pacific +1 650.933.3000

©2005 Silicon Graphics, Inc. All rights reserved. Silicon Graphics, SGI, Altix, XFS, and the SGI logo are registered trademarks and SGI ProPack, SGI Advanced Linux, NUMAflex, CXFS Performance Co-Pilot, Silicon Graphics Prism, and The Source of Innovation and Discovery are trademarks of Silicon Graphics, Inc. in the U.S. and/or other countries worldwide. Intel, the Intel logo, Itanium and Intel Xeon are trademarks or registered trademarks of Intel Corporation or its subsidiaries in the United States and other countries. Red Hat is a registered trademark of Red Hat, Inc. Novell is a registered trademark of Novell, Inc., in the United States and other countries. SUSE is a trademark of SUSE LINUX Products GmbH, a Novell business. Linux is a registered trademark of Linus Torvalds in several countries, used with permission by Silicon Graphics, Inc. UNIX is a registered trademark of The Open Group in the U.S. and other countries. All other trademarks mentioned herein are the property of their respective owners.