



## SGI® Reality Center Insight™ Solution

Making Visualization Easy with the High-Resolution SGI Reality Center Insight Display

### Features

- High-resolution, single-channel, freestanding display
- Perfect design for conference rooms, offices, classrooms, public spaces, trade shows, and laboratories
- Excellent sight lines for standing and seated audiences
- Components that fit through a standard single doorway and can be assembled in less than one day
- High-brightness 1280x1024 pixel resolution
- Optimal fit with SGI Onyx family and Silicon Graphics Octane2
- Standard stereo audio
- SGI direct support on all components

### Business Benefits

- Zero-facility-impact design
- Rapid implementation
- Scalable to meet future needs
- Tuned to maximize SGI hardware investment
- Comprehensive support direct from SGI:
  - Industry-leading customer support center
  - Toll-free phone number, Web site, computerized tracking
  - Unlimited on-site troubleshooting
  - Local staff trained by SGI
  - Standard one-year, next-day, on-site support
- Same-day support available

### Collaboration Made Easy

The success of any organization depends on the effectiveness of collaboration between people. The SGI Reality Center Insight solution is designed with this in mind. The unique, eye-catching, high-resolution display enables groups to visualize their data in a manner that captures the imagination and inspires insight and interactivity. Cost-effective and easy to install, SGI Reality Center Insight makes collaborative visualization more accessible and affordable than ever before. High-quality graphics imagery, video, presentation slides, and other media sources can be viewed on this extremely high-resolution display. Excellent sight lines enable seated and standing viewers to fully experience the presentation. The rear-projected implementation prevents the casting of shadows on the screen by people standing or sitting close to it.

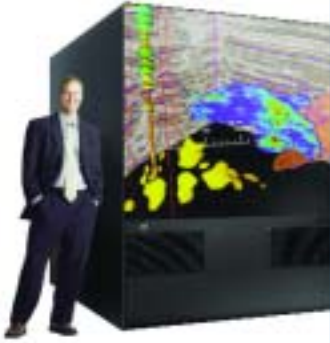
### Leading Immersive Technology Solutions

Since 1994, SGI has provided more than 550 Reality Center™ visualization facilities to manufacturing, education, energy, and government customers around the world. Our best-of-breed solutions combine industry-leading computer and display systems, innovative software applications and tool-kits, business analysis, process planning, and implementation consulting services to customize each Reality Center facility and provide your organization with a key competitive edge. With 15 years of experience developing and supporting virtual reality applications, SGI understands the complex issues involved in making the transition to immersive visualization and can help your organization accomplish the transition with ease. SGI® solutions and services enable new opportunities for taking the lead within your field, complementing and dramatically improving your work processes to achieve vital strategic advantage.

### Optimizing Your Facility with SGI Professional Services

As the originator of the Reality Center concept, SGI offers the most knowledgeable consulting services available to implement your SGI Reality Center facility. Our extensive employee base and set of physical facilities allow us to offer consistent solutions in almost any location on the globe. By teaming with SGI Professional Services, your organization reduces its risk by having us take ultimate delivery responsibility. We provide a single point of responsibility in every project, ensuring that scope, budget, and schedules are all managed to meet predefined business outcomes. Offering informed views on market influences and technology trends, SGI Professional Services provides the industry knowledge and skills to keep you at the forefront.





### Undeniable Advantage

SGI Technology Solutions ongoing support is the best in the industry. We offer a world-class infrastructure to support your SGI Reality Center Insight configuration. Our next-day support will keep you ahead of your competition. By being the global leader, we can deploy a local system engineer to support your Reality Center facility. We also offer a single point of contact for triage, call tracking, and escalation. Our flexible support contracts will enable you to get the biggest bang for your buck while protecting your investment. The SGI Technology Solutions support team is ready to help you.

SGI provides additional services to fully integrate SGI Reality Center Insight into your business processes, making it an operational success for your organization as well as a technological success for SGI.

### SGI® Onyx® 3000 Series and Silicon Graphics® Octane2™ Systems

SGI Reality Center facilities are based on the powerful Silicon Graphics Octane2, SGI Onyx 3000 series and SGI® Onyx® 300 high-performance graphics systems. Onyx 3000 series and Onyx 300 systems are off-the-shelf UNIX® supercomputers designed to drive virtual environments. Onyx 3000 series and Onyx 300 systems simultaneously compute and process 3D graphics, imaging, and video data in real time. The industry-leading feature set includes clip-mapping, texture-paging, volume rendering, anti-aliased full-frame HDTV display, multiple visual display channels, and a variety of tools for managing video, audio, and advanced user-interface devices. Octane2 is the world's most advanced desktop visualization workstation. It combines

the groundbreaking VPro™ 3D graphics system, industry-leading crossbar architecture, and the latest high-performance MIPS® processor in an affordable power desktop package. Octane2 is designed to support a suite of industry-leading features, such as the Dual Head and Dual Channel Display options that maximize your visualization resources and the new, cost-effective PowerDuo configuration that allows two users to share the same high-performance system.

### Knowledge Transfer and Training Solutions

After installation is complete, SGI offers detailed postinstallation knowledge transfer to help integrate the new Reality Center facility into your current business practices. In addition, we align strategy, people, processes, information, and technology to help you stay ahead of the curve. SGI specializes in building integrated Reality Center solutions to solve your most challenging and critical business problems. We can ensure your facility's ongoing success by delivering customized learning solutions and classes for system administrators and graphics specialists.

### Seamless Integration

Designed for all kinds of conference and training rooms, as well as design offices and laboratories, the SGI Reality Center Insight solution integrates easily into your working environment. The system supports a wide range of industries and applications:

- Manufacturing
- Government and defense
- Education and research
- Energy
- Engineering
- Sciences

SGI Technology Solutions provides expert-to-expert technical services and solutions:

- Systems Engineering
- Professional Services
- Managed Services
- Support Services

For additional information, please visit [www.sgi.com](http://www.sgi.com)

### SGI Reality Center Insight Solution Technical Specifications

<p><b>Image</b></p> <ul style="list-style-type: none"> <li>• Screen size: 60" x 75"</li> <li>• Projection system: Active-stereo DLP projector</li> <li>• Resolution: 1280x1024 pixel native resolution</li> <li>• Contrast ratio: 350:1 ANSI, 500:1 full field</li> <li>• ANSI lumens: 2000</li> <li>• Vertical frequency: 24–120 Hz</li> <li>• Horizontal frequency: 15–120 KHz</li> <li>• Stereoscopic source compatibility: 1280 x1024 @ 96 Hz, 100 Hz, 105 Hz</li> </ul>	<p><b>Physical and Electrical</b></p> <ul style="list-style-type: none"> <li>• Footprint: 75" W X 93" H X 66"D</li> <li>• Line frequency: 50–60 Hz</li> <li>• Current rating: 14 amps [max. 110 V]</li> <li>• Heat dissipation: 3200 BTU/hour</li> </ul> <p><b>Inputs</b></p> <ul style="list-style-type: none"> <li>• Analog video 5 BNC for RGBHV</li> <li>• Emitter/projector BNC for stereo TTL sync</li> <li>• Dual RS232 DB-9 communication ports</li> <li>• Audio L and R RCA preamp inputs</li> </ul>
<p><b>2nd Video Input Option</b></p> <ul style="list-style-type: none"> <li>• 2nd Analog video 5 BNC for RGBHV</li> </ul>	



**Corporate Office**  
1600 Amphitheatre Pkwy.  
Mountain View, CA 94043  
[650] 960-1980  
[www.sgi.com](http://www.sgi.com)

North America [800] 800-7441  
Latin America [52] 5267-1387  
Europe [44] 118.925.75.00  
Japan [81] 3.5488.1811  
Asia Pacific [65] 771.0290