

SGI™ Internet Server Environment

Features and Benefits

- Single-CD collection of popular open-source software
- Simplified installation via powerful scripts and Web-based user interface
- Fully supported tools for quick deployment, easy monitoring, and remote administration
- Web-based tools to streamline installation, troubleshooting, and networking
- Bastille security lockdown with easy installation script
- Upgradable Tripwire intrusion detection software
- Installation scripts for Sendmail and Apache
- Single-point-of-call support

The Fast and Easy Way to Deploy Internet Server Solutions

The server company that powers the world's most demanding Internet sites now offers powerful SGI Internet Server Environment (ISE) software. Designed for service providers such as ISPs and ASPs, Linux® OS-based ISE software is a cost-effective Internet-serving software solution. ISE includes advanced management, monitoring, and security tools with integrated installation scripts and a Web-based user interface.

ISE provides a basic Internet infrastructure and a foundation to support the messaging, infrastructure, Web-serving, and e-commerce applications typically required by service providers.

Designed to Grow with Your Business

To meet ever-increasing customer demands, service providers must be able to integrate new solutions into existing infrastructures quickly and affordably. ISE is designed specifically for service providers that need to keep pace with expanding network needs while controlling expenses.

Reduced Support Costs Improve the Bottom Line

ISE is highly reliable, requires very little maintenance or support, and integrates advanced manageability features. Support costs are further reduced due to:

- Reliable Linux operating system
- Centralized configuration, administration, and management features
- Improved system security through powerful server lockdown tools

SGI also reduces support costs by offering complete single-point-of-call support for ISE software, providing quick response from SGI's industry-leading global support organization.

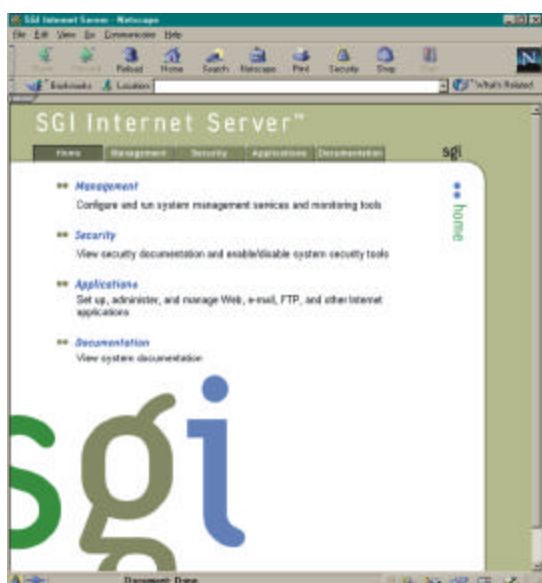
Reliable Thin Server Architecture

ISE is qualified to run on the SGI™ 1100 server, which combines SGI's commitment to high-performance, scalable servers with the reliability and reduced cost of the Linux operating system. Leveraging SGI's collaborative development with the open source community, ISE is optimized to provide high performance for the Linux operating system.

Turn to SGI for Affordable Internet Serving Solutions

ISE is the most viable solution for service providers interested in taking advantage of the reliability of the Linux operating system.

ISE is part of the Media Commerce™ suite of solutions from SGI that enable customers to create, manage, deliver, and transact content over a vast range of networks.



SGI Internet Server Environment Technical Specifications

<p>Hardware</p> <ul style="list-style-type: none"> ISE is qualified to run on the SGI I100 server 	<p>Security Features</p> <p>Intrusion Detection</p> <ul style="list-style-type: none"> Tripwire Integrity Assessment Technology actively monitors configuration files to safeguard against corruption or tampering <p>Secure Server</p> <ul style="list-style-type: none"> Bastille Hardening Program provides lockdown scripts and a secure configuration that protects against unauthorized use SGI Secure Server Operations Guide A guide to security-conscious customization and operations 	<p>Support and Warranty</p> <ul style="list-style-type: none"> Standard software support 90-day advisory support during business hours Software support upgrades Upgrades available from limited incident upgrade packages up to 7x24 annual contracts <p>For more information, please visit www.sgi.com/go/broadband.</p>
<p>Manageability Features</p> <p>Centralized Management</p> <ul style="list-style-type: none"> Configuration and administration of a single server or a cluster of servers Easy-to-use Web-based user interface, central repository, and one-stop configuration and customization <p>Customer Content Management</p> <ul style="list-style-type: none"> End users can easily upload information using FTP Improve customer self-service and reduce the need for technical support 	<p>Applications</p> <ul style="list-style-type: none"> Apache Web Server[®] Sendmail messaging services[®] 	

[®]When installed with the Red Hat[®] distribution of the Linux operating system.



Corporate Office
1600 Amphitheatre Pkwy.
Mountain View, CA 94043
[650] 960-1980
www.sgi.com

North America [1800] 800-7441
Latin America [650] 933-4637
Europe [44] 118.925.75.00
Japan [81] 3.5488.1811
Asia Pacific [65] 771.0290