

IRISconsole™

Multiserver Management System

Features

- Easy-to-use graphical user interface
- Console services, including logging
- System controller access
- Text-based interface for easy remote access over low-speed connections
- A SCSI or Ethernet attached terminal server to provide serial connectivity to local or remote servers

A Single “Intelligent” Console Server

Managing all the servers in your environment can be a challenging job. Every server in your computing environment has its own console for system management and message logging, and often your servers are spread throughout your site or even the world. The IRISconsole multiserver management system lets you consolidate and remotely manage the consoles in your environment by replacing cumbersome dumb terminals with a powerful, easy-to-use central control workstation to manage and monitor multiple servers locally or around the world.

The IRISconsole system can monitor and manage the activities of many servers. This provides a convenient and intelligent method for monitoring multiple systems and saves floor space. Each IRISconsole can monitor up to 64 SGI™ servers running the IRIX® operating system.

The IRISconsole system offers intelligent console services. Multiple users can access and share consoles. If a console is in use by another user, an administrator can view or take over that server’s console. In addition, IRISconsole will log console messages for any attached server, providing a record of activities for administrators to use for later reference.

Easy Access to the System Controller

The IRISconsole system manages more than just consoles. An administrator can open a window to any attached system controller and perform system controller functions from the IRISconsole workstation. Common system controller functions have been built into the IRISconsole user interface and can be accessed with the push of a button. Some important built-in functions include:

- Generating an interrupt to create a diagnostic memory dump
- Resetting the system hardware
- Power cycling the system
- Monitoring temperature and blower speed information

Easy-to-Use Graphical Interface

It is easy to manage and monitor your servers with the IRISconsole system’s graphical user interface. A set of servers can be grouped together to form a logical site in order to ease location of management functions in large installations. The IRISconsole graphical window interface allows the operator to click a mouse button to perform common tasks. The console interface on the IRISconsole system has a scrollable history that allows the user to log console activities for future reference. All viewable graphs can be saved to a file for interchange across a network.

Integrated Service Tools

The IRISconsole system can help SGI Customer Service more quickly diagnose and resolve problems. When monitoring an SGI™ Origin™ server, IRISconsole can be integrated with the service tool used by SGI Customer



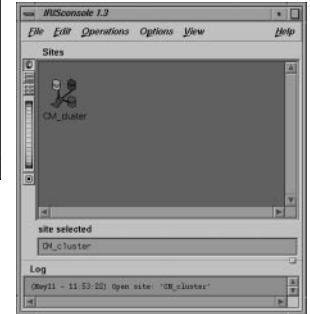
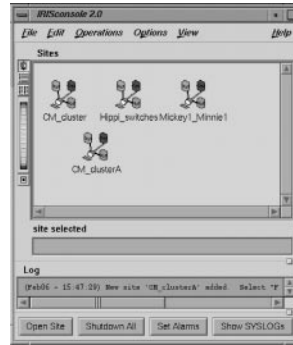
Service, allowing support personnel to log onto IRISconsole and access tools to provide service on any of the Origin servers connected to the IRISconsole system.

IRISconsole Multiplexer

The IRISconsole Multiplexer [ST-1616, EL-8, or EL-8 and EL-16] provides the expanded serial connectivity needed to monitor multiple servers. It connects quickly and easily to the SCSI port on a Silicon Graphics® O2®, Silicon Graphics® Indy®, or Silicon Graphics® Octane® workstation or can be connected anywhere on a network accessible to the workstation. Up to eight servers can be connected to a single serial port multiplexer. Additional SCSI-attached or network-attached multiplexers can be added to the IRISconsole workstation, increasing its capacity. Because the IRIX operating system sees the serial ports as normal TTY ports, there are no complex network configurations or confusing protocols. This can save hours of setup time compared to pseudoports on terminal servers.

Remote Server Monitoring

The network-attached EL-16 can be located anywhere on a network accessible to the IRISconsole workstation. This allows a single IRISconsole system to monitor any server on



the network, regardless of location. This helps system administrators better manage their remote servers.

Remote Access to IRISconsole

With modem or network access to the host workstation, any administrator can remotely access the IRISconsole system to monitor and manage servers through a text-based interface or graphical interface [with a SLIP, PPP, or network connection].

Note: If remote system control ports are not being used [i.e., the IRISconsole system is being used only to access the system consoles], then one serial port multiplexer can handle 16 servers. Assumes use of an ST-1616 or EL-16 multiplexer.

IRISconsole Technical Specifications

Host Workstation • Indy, O2, or Octane [IRIX 6.5 only]	Maximum Number of Multiplexers Supported • ST-1616: 2 per SCSI bus up to 4 • EL-16: 4 total • EL-8: 8 total • Maximum of 64 total ports
Operating System • IRIX 6.2, 6.3, 6.5	Serial MUX Baud Rate • 75K-115K baud
Systems Managed • Origin™ 200, Origin™ 2000, Challenge®, Power Challenge™, Onyx®, Onyx2™, and other systems with serial console ports	Serial MUX Connectors • DB25 female [ST-1616] • RJ45 [EL-16]
Supported Multiplexers • Central Data ST-1616 [SCSI-attached] • Central Data ST-1032 [SCSI-attached]* • Central Data EL-16 [Ethernet-attached] • Central Data EL-8 [Ethernet-attached]	Maximum Serial Cable Length • 50 ft [15.2 m]
*ST-1032 not sold by SGI	Note: IRISconsole employs its own password-based security system separate from the IRIX/etc/passwd. This allows system administrators to configure a cluster of servers securely.



Corporate Office
 1600 Amphitheatre Pkwy.
 Mountain View, CA 94043
 [650] 960-1980
www.sgi.com

North America [800] 800-7441
 Latin America [650] 933-4637
 Europe [44] 118.925.75.00
 Japan [81] 3.5488.1811
 Asia Pacific [65] 771.0290

© 1999 Silicon Graphics, Inc. All rights reserved. Specifications subject to change without notice. Silicon Graphics, IRIS, O2, IRIX, Octane, Onyx, and Challenge are registered trademarks, and SGI, IRISconsole, Origin, Power Challenge, Onyx2, and the SGI logo are trademarks, of Silicon Graphics, Inc. Indy is a registered trademark used under license in the U.S. and owned by Silicon Graphics, Inc., in other countries worldwide. All other trademarks mentioned herein are the property of their respective owners.

2361 [7/99]

J10583